

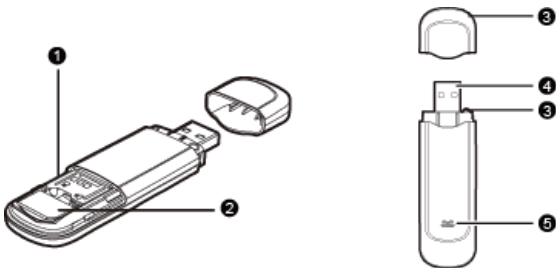
Thank you for choosing Mobile Broadband E1550 E1550 (hereinafter referred to as the E1550).

Note:

This manual briefly describes the appearance, the preparation and the process for installing/uninstalling.

Getting to Know your E1550

The following figures show the appearance of the E1550. The actual product may differ.



❶ Micro SD card slot

Holds the Micro SD card.

❷ USIM/SIM card slot

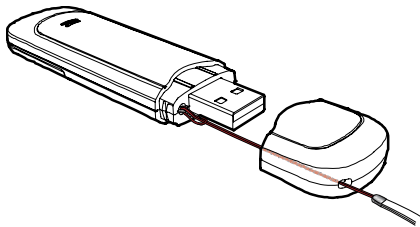
Holds the USIM/SIM card.

❸ Lanyard Hole

Ties the cap and the E1550 together so that they will not be easily lost.

Note:

The lanyard is an optional accessory. If it is not provided in the package, you can buy one yourself.



❹ USB connector

Connects to the USB interface of the PC.

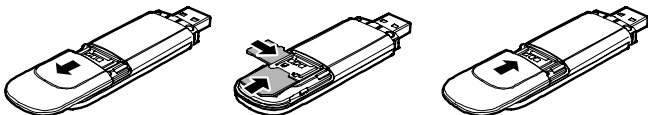
❺ Indicator

Indicates the status of the E1550.

- Green, blinking twice every 3s: The E1550 is powered on.
- Green, blinking once every 3s: The E1550 is registered to the 2G network.
- Blue, blinking once every 3s: The E1550 is registered to the 3G/3G+ network.
- Green, always on: The 2G connection is set up.
- Blue, always on: The 3G connection is set up.
- Cyan, always on: The 3G+ connection is set up.
- Off: The E1550 is removed from the PC.

Preparing the E1550

1. Take out of the back cover of the E1550.
2. Insert the USIM/SIM card and the Micro SD card into the card slots. Make sure that the cards are properly inserted.



Note:

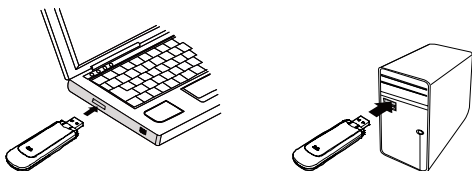
- Micro SD card is an optional accessory. If the Micro SD card is not provided in the package, you can buy one yourself.
- Do not remove the USIM/SIM card and the Micro SD card when they are being used. Removing the cards during an operation may damage the cards as well as the device, and data stored on the cards may be corrupted.

Installation Guide

The procedure for installing the management program depends on the operating system installed on your PC. The following section takes Windows XP as an example.

Connecting the E1550 with a PC

Plug the E1550 into the USB interface of the PC.



Installing the E1550 Management Program

1. Connect the E1550 with the PC.
2. The OS automatically detects and recognizes new hardware and starts the installation wizard.

Note:

If the auto-run program does not respond, find the AutoRun.exe file in the driver path. Then double-click **AutoRun.exe** to run the program.

3. Follow the prompts of the installation wizard.
4. After the program is installed, the shortcut icon of the management program is displayed on the desktop.

Starting the Management Program

After the E1550 is installed, the management program is launched automatically. Then every time the E1550 is connected to the PC, the management program is launched automatically.

You can also double-click the shortcut icon on the desktop to launch the management program.


Uninstalling the Management Program

1. Choose **Start > Control Panel**.
2. Find the management program, and click **Add/Remove program** to uninstall the management program.

Note:

It is recommended to restart the PC after the un-installation to ensure that the management program is completely uninstalled.

Removing the E1550

1. Double-click  in the system tray. The **Unplug or Eject Hardware** interface is displayed.
2. Select the hardware related to the E1550 and click **Stop**.
3. When the prompt "**It is safe to remove the device**" is displayed, remove the E1550.

Note:

Before removing the E1550, exit the management program.